

How to flash TWCT22 with Easy Flash Instruction

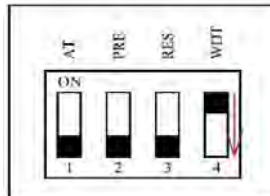
Before start:

Copy “EasyFlash TM1.exe” and “TWCT22.XX.XXX.dof” files into one directory, where
EasyFlash TM1.exe – Easy Flash software executable file;
TWCT22.XX.XXX.dof – TWCT22 Firmware file.

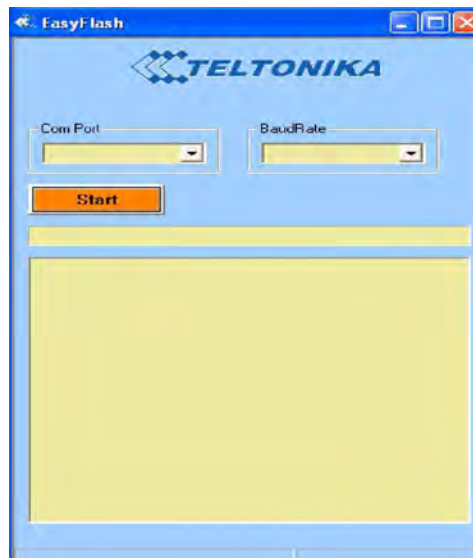


Flashing process:

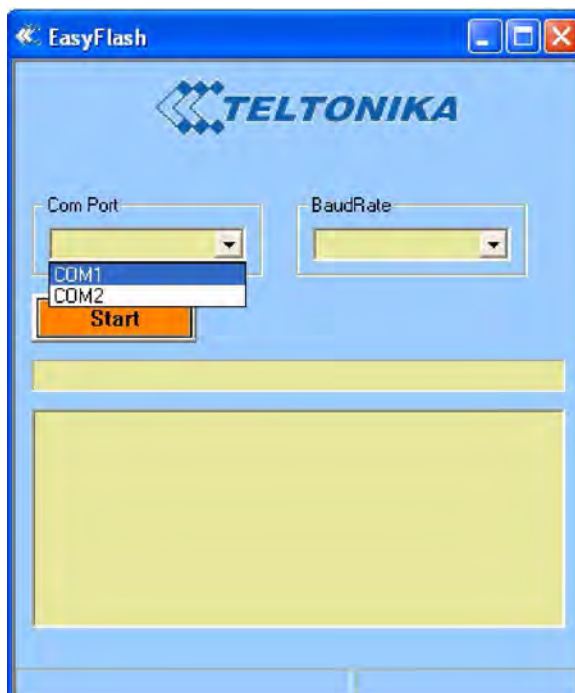
1. Connect TWCT22 device to PC through RS232 (Port 1/2) cable. And Switch 4th pin OFF.



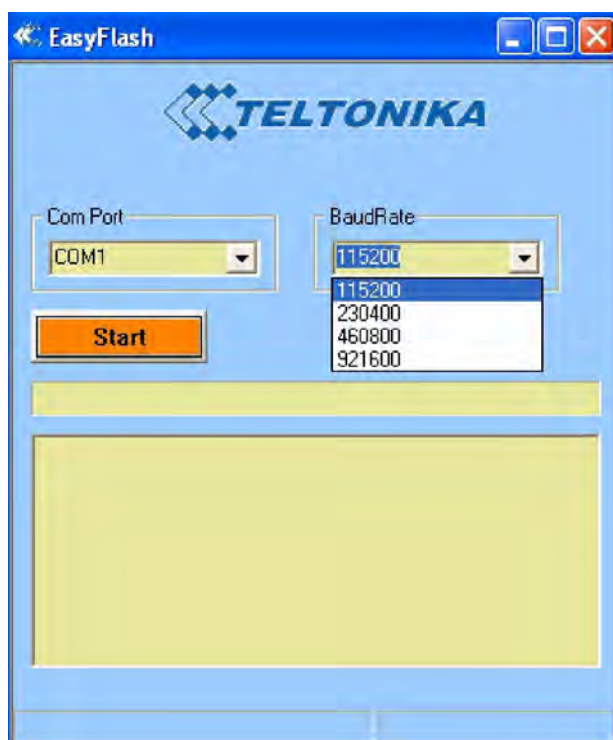
2. Start Easy Flash software.



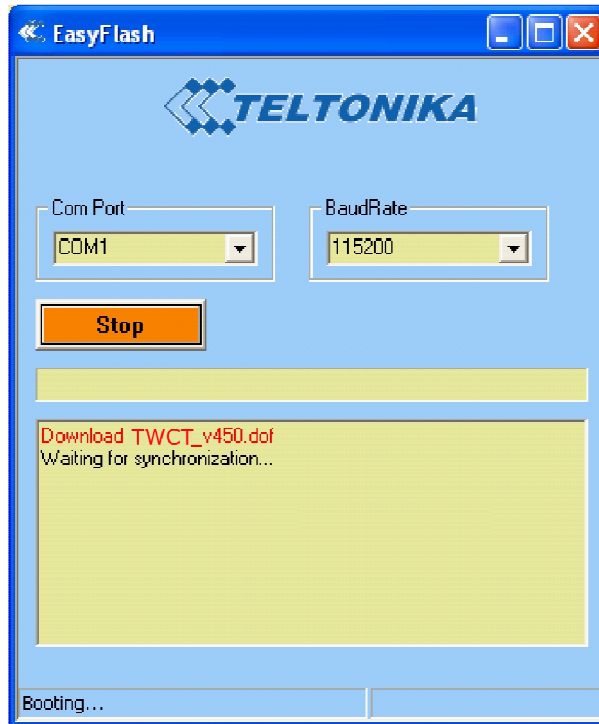
3. Select correct COM port.



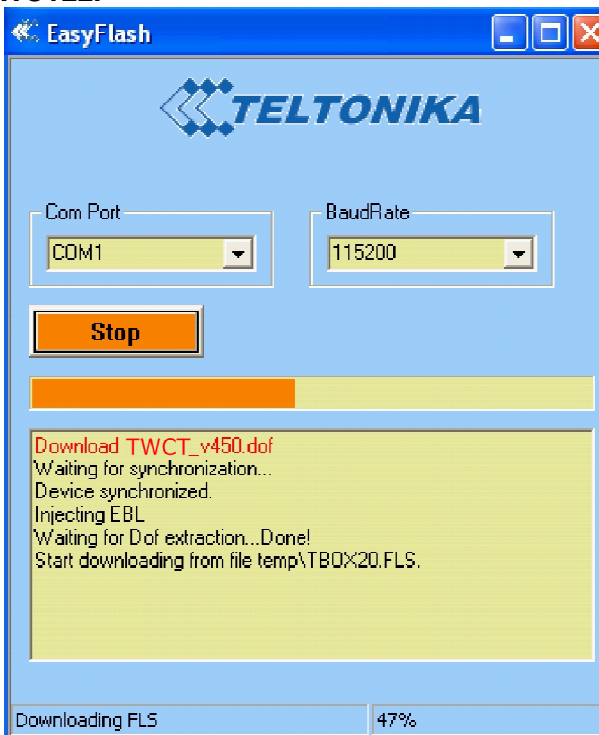
4. Select data transfer Baud Rate (115200 bps).



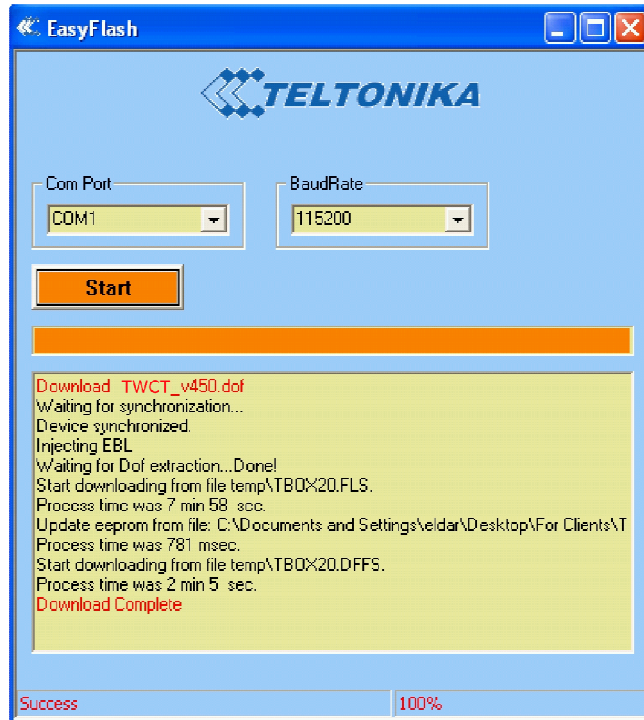
5. Press "Start" button.



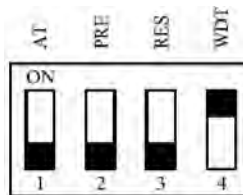
6. Power ON electricity of TWCT22.



7. After successful flashing process in Status window you'll see "Download Complete" message.



8. After successful flashing process, switch OFF power supply then switch ON 4th pin.



9. Now you can configure your device.